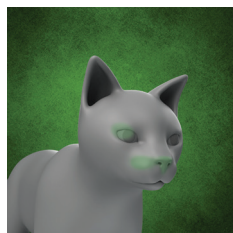
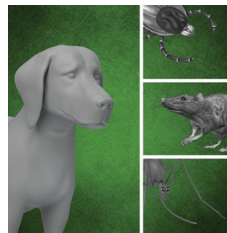


# Fast Track Veterinary

Detection of infectious diseases in animals



# FAST TRACK VETERINARY



## Syndromic approach

**Species focused**,  
diagnostic approach.  
**Disease-based** instead  
of pathogen-based.



## Lyophilised technology

All the reagents included in a  
single patient sample tube,  
you **just need to add**  
**nucleic acid extract**.



## Expert support

**Scientist-to-scientist** technical support,  
we offer technical help and advice for all FTvet users.



## Quality assured

**Extensive** internal/external validations.  
Partnerships with **reference institutions**.



## Compatibility

Many real-time thermocyclers  
are **validated with FTvet kits**.

## Feline kits

Oculo-Respiratory Infections	Description	Samples	Cat. no.
FTvet Feline Eye	One ready to use lyo mix (8-well strips) for detection of feline herpesvirus, <i>Chlamydomphila felis</i> and <i>Mycoplasma felis</i> , including an internal control	Ocular swabs	FTvet-1-32-H
FTvet Feline Respiratory Pathogens	One ready to use lyo mix (8-well strips) for detection of feline calicivirus, feline herpesvirus and <i>Bordetella bronchiseptica</i> , including an internal control	Throat and nasal swabs	FTvet-2-32-H
FTvet Feline Oculo-Respiratory	Two ready to use lyo mixes (8-well strips) for detection of feline calicivirus, feline herpesvirus, <i>Bordetella bronchiseptica</i> , <i>Chlamydomphila felis</i> and <i>Mycoplasma felis</i> , including an internal control	Ocular, nasal and throat swabs	FTvet-3-32-H

Anaemia	Description	Samples	Cat. no.
FTvet Feline Anaemia I	One ready to use lyo mix (8-well strips) for detection of feline immunodeficiency virus and feline leukemia virus, including an internal control	EDTA blood Buccal swabs	FTvet-4-32-H

## Feline and Canine kits

Gastroenteritis	Description	Samples	Cat. no.
FTvet Feline/Canine Viral Gastroenteritis	One ready to use lyo mix (8-well strips) for detection of feline coronavirus/canine coronavirus and feline panleukopenia virus/canine parvovirus type 2, including an internal control	Faeces Faecal swabs	FTvet-6-32-H
FTvet Feline/Canine Bacterial Gastroenteritis	One ready to use lyo mix (8-well strips) for detection of <i>Campylobacter coli/fetus/jejuni</i> , <i>Clostridium perfringens</i> enterotoxin and <i>Salmonella</i> spp., including an internal control	Faeces Faecal swabs	FTvet-8-32-H
FTvet Feline/Canine Parasitic Gastroenteritis	One ready to use lyo mix (8-well strips) for detection of <i>Cryptosporidium</i> spp., <i>Giardia</i> spp. and <i>Tritrichomonas foetus</i> (feline only), including an internal control	Faeces Faecal swabs	FTvet-11-32-H

SOON

## Canine kits

Respiratory Infections	Description	Samples	Cat. no.
FTvet Canine Distemper Virus	One ready to use lyo mix (8-well strips) for detection of canine distemper virus, including an internal control	Nasal, throat and conjunctival swabs (dogs) Respiratory swabs, tissue extracts (foxes)	FTvet-7-32-H
Vector- and waterborne infections	Description	Samples	Cat. no.
FTvet Leptospirosis	One ready to use lyo mix (8-well strips) for detection of <i>Leptospira</i> spp., including an internal control	EDTA blood Urine	FTvet-12-32-H

SOON



## Made in Europe, distributed worldwide.

### **Fast Track Diagnostics Ltd.**

Seaview, No. 2, Qui-Si-Sana Seafront, Sliema, SLM 3110, Malta

### Legal manufacturer

Fast Track Diagnostics Luxembourg S.à r.l.: 29, rue Henri Koch, L-4354 Esch-sur-Alzette

### **Enquiries**

Sales enquiries:

**T** +356 2765 4302 • **F** +356 2765 4303 • **E** [orderFTDLTD.dl@siemens-healthineers.com](mailto:orderFTDLTD.dl@siemens-healthineers.com)

Technical enquiries:

**T** +352 281 098-1 • **E** [vetsupport-ftd.team@siemens-healthineers.com](mailto:vetsupport-ftd.team@siemens-healthineers.com)

Administrative and finance enquiries:

**T** +356 2765 4302 • **F** +356 2765 4303 • **E** [infoFTD.dl@siemens-healthineers.com](mailto:infoFTD.dl@siemens-healthineers.com)

**[www.fast-trackdiagnostics.com](http://www.fast-trackdiagnostics.com)**

FTvet assays are for veterinary use only.  
For Research Use only.  
Regulatory requirements may vary by country.

FTV.MK2.EN.2019.5

We make every efforts to keep the information on our publications accurate, but accept no liability whatsoever for the content provided. The Fast Track Diagnostics products and related documentation are subject to continuous improvement. Therefore Fast Track Diagnostics reserves the right to change products and documentation without notice.

Copyright© 2019 Fast Track Diagnostics Ltd. All Rights Reserved. All trademarks mentioned in this document are the properties of their respective owners.