



Made in Europe, distributed worldwide.

All assays are for veterinary *in vitro* use only. Regulatory requirements vary by country.
Our manufacturing processes meet the ISO 13485 standard.

General information: T +352 281 098-1 • E info@fast-trackdiagnostics.com
Technical enquiries: T +352 281 098-1 • E vetsupport@fast-trackdiagnostics.com

Legal Manufacturer - Fast Track Diagnostics Luxembourg SARL:
29, rue Henri Koch, L-4354 Esch-sur-Alzette

www.fast-trackdiagnostics.com

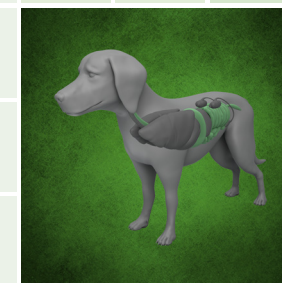
We make every effort to keep the information on our publications accurate, but accept no liability whatsoever for the content provided. The Fast Track Diagnostics products and related documentation are subject to continuous improvement. Therefore Fast Track Diagnostics reserves the right to change products and documentation without notice.

Copyright© 2018 Fast Track Diagnostics Ltd. All Rights Reserved. All trademarks mentioned in this document are the properties of their respective owners.

FTV.MK2.EN.2018.3

SYNDROMIC REAL-TIME PCR KITS

Infectious diseases in companion animals



Fast Track 
VETERINARY

A Siemens Healthineers Company

Since its formation in 2006, Fast Track Diagnostics (FTD) has become established as the leading global suppliers of real-time PCR multiplexing kits. In 2017, FTD launched a range of lyophilised kits for the detection of infectious diseases in companion animals.

Our veterinary team works to ensure FTD tests give you the most precise and accurate results in less than 2 hours.

Syndromic approach

Animal focused, diagnostic approach

Disease-based instead of pathogen-based

Compatibility

Can be used with most PCR platforms on the market

Expert support

Scientist-to-scientist technical support

Lyophilised format

You just need to add nucleic acid extract

Cost and time effective

Saves set-up time: no need to mix reagents

Transport at room temperature

Quality assured

External clinical validation

Feline kits

Oculo-Respiratory infections

Kit name	Description	Samples	Cat. no.	Reactions
FTvet Feline Eye	One ready to use lyo mix (8-well strips) for detection of feline herpesvirus, <i>Chlamydo-phila felis</i> and <i>Mycoplasma felis</i> , including an internal control	Ocular swabs	FTvet-1-32-H	32
FTvet Feline Respiratory Pathogens	One ready to use lyo mix (8-well strips) for detection of feline calicivirus, feline herpesvirus and <i>Bordetella bronchiseptica</i> , including an internal control	Throat swabs Nasal swabs	FTvet-2-32-H	32
FTvet Feline Oculo-Respiratory Pathogens	Two ready to use lyo mixes (8-well strips) for detection of feline calicivirus, feline herpesvirus, <i>Bordetella bronchiseptica</i> , <i>Chlamydo-phila felis</i> and <i>Mycoplasma felis</i> , including an internal control	Ocular swabs Nasal swabs Throat swabs	FTvet-3-32-H	32

Feline kits

Anaemia

Kit name	Description	Samples	Cat. no.	Reactions
Available soon FTvet Feline Anaemia I	One ready to use lyo mix (8-well strips) for detection of feline immunodeficiency virus and feline leukemia virus, including an internal control	EDTA blood Buccal swabs	FTvet-4-32-H	32
Available soon FTvet Feline Anaemia II	One ready to use lyo mix (8-well strips) for detection of <i>Candidatus Mycoplasma haemominutum</i> , <i>Candidatus Mycoplasma turicensis</i> and <i>Mycoplasma haemofelis</i> , including an internal control	EDTA blood	FTvet-5-32-H	32

Feline and Canine kits

Gastroenteritis

Kit name	Description	Samples	Cat. no.	Reactions
FTvet Feline/Canine Viral Gastroenteritis	One ready to use lyo mix (8-well strips) for detection of feline coronavirus/canine coronavirus and feline panleukopenia virus/canine parvovirus type 2, including an internal control	Faeces Faecal swabs	FTvet-6-32-H	32
Available soon FTvet Feline/Canine Bacterial Gastroenteritis	One ready to use lyo mix (8-well strips) for detection of <i>Campylobacter coli/fetus/jejuni</i> , <i>Clostridium perfringens</i> enterotoxin and <i>Salmonella</i> spp., including an internal control	Faeces Faecal swabs	FTvet-8-32-H	32
Available soon FTvet Feline/Canine Parasitic Gastroenteritis	One ready to use lyo mix (8-well strips) for detection of <i>Cryptosporidium</i> spp., <i>Giardia</i> spp. and (feline only) <i>Tritrichomonas foetus</i> , including an internal control	Faeces Faecal swabs	FTvet-11-32-H	32

Canine kits

Respiratory infections

Kit name	Description	Samples	Cat. no.	Reactions
FTvet Canine Distemper Virus	One ready to use lyo mix (8-well strips) for detection of canine distemper virus, including an internal control	Nasal swabs Throat swabs Ocular swabs	FTvet-7-32-H	32

Canine kits

Vector- and waterborne infections

Kit name	Description	Samples	Cat. no.	Reactions
Available soon FTvet Canine Leptospirosis	One ready to use lyo mix (8-well strips) for detection of <i>Leptospira</i> spp., including an internal control	EDTA blood Urine	FTvet-12-32-H	32